

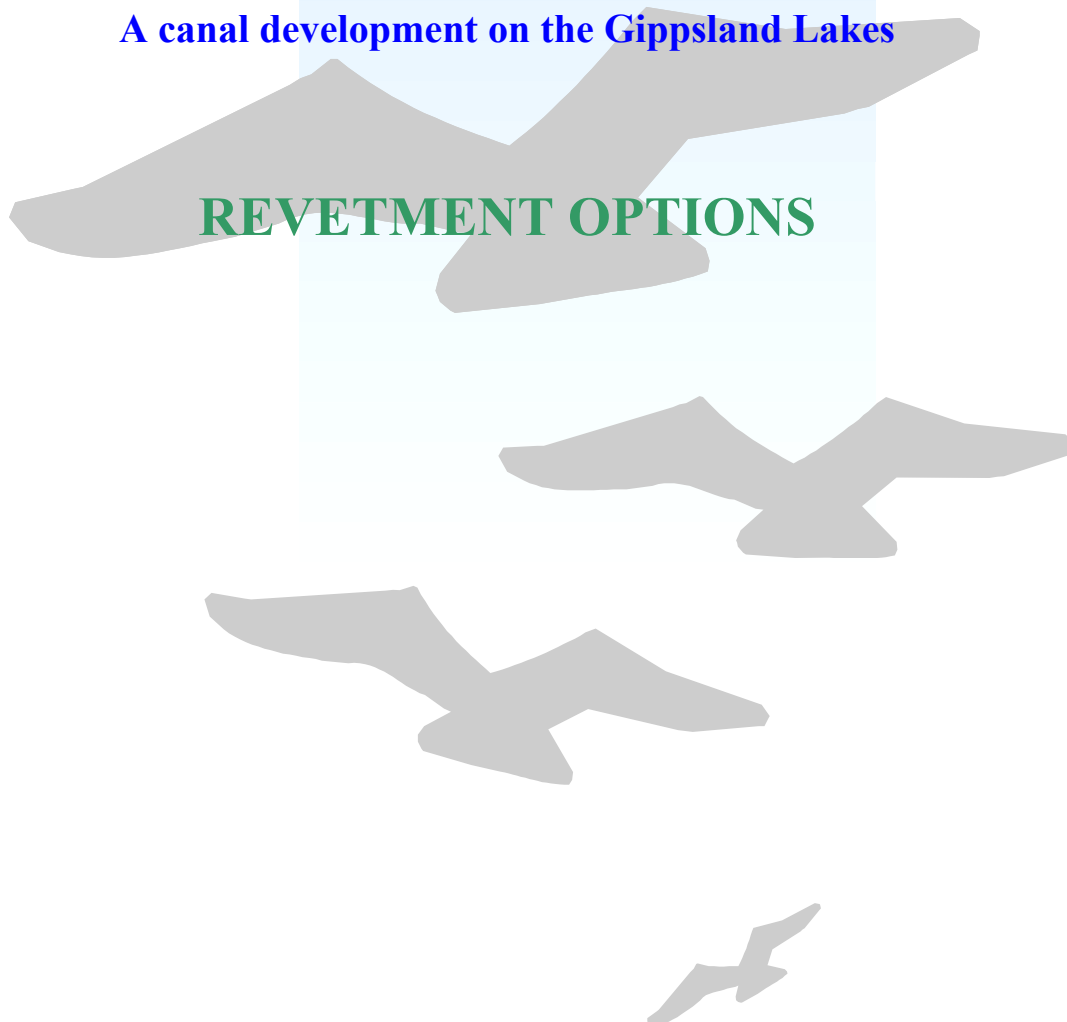


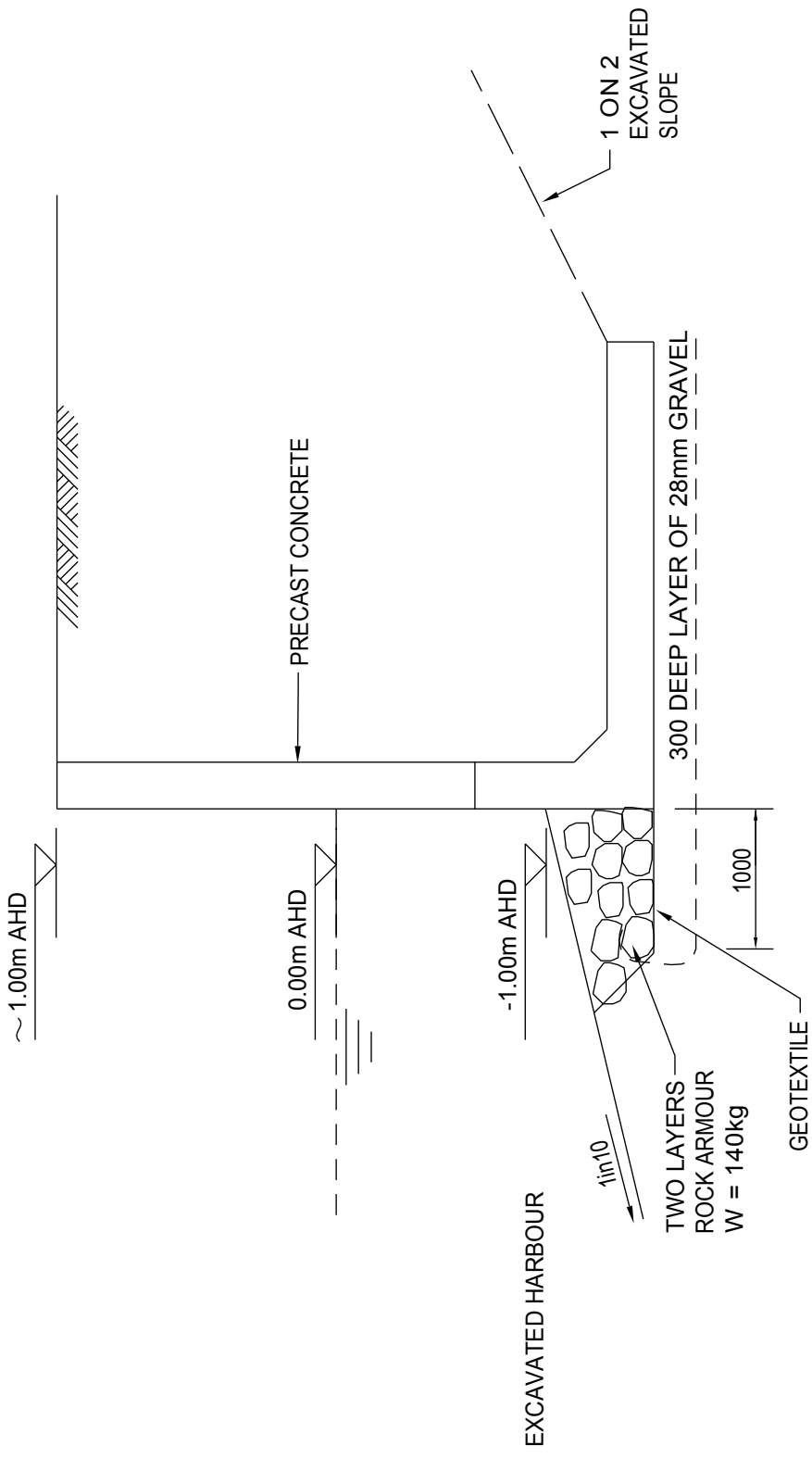
ENVIRONMENT EFFECTS STUDY

WELLINGTON WATERS

A canal development on the Gippsland Lakes

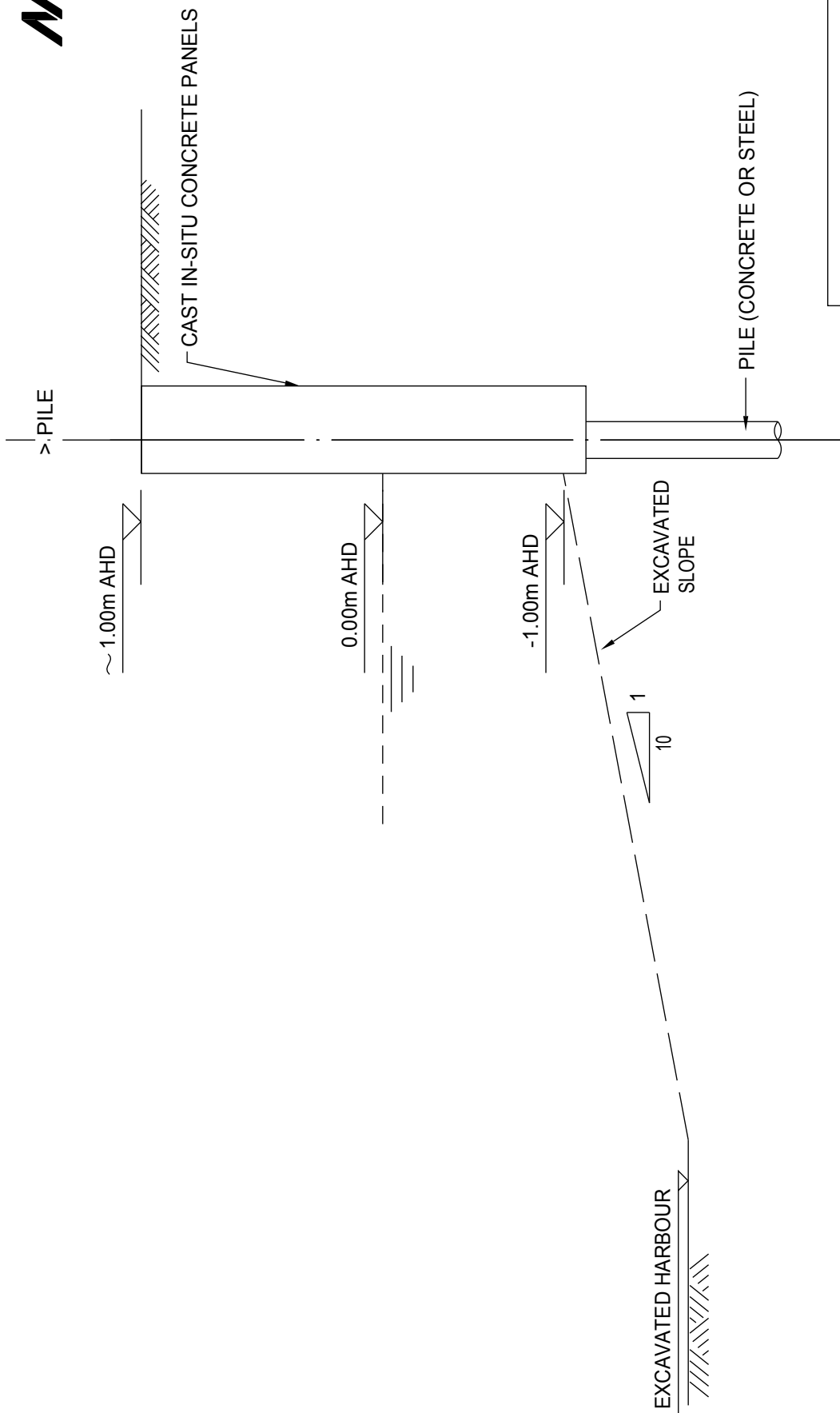
REVETMENT OPTIONS





PRECAST RETEMENT TYPE

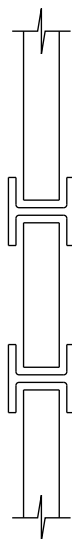
SECTION **1**
NOT TO SCALE



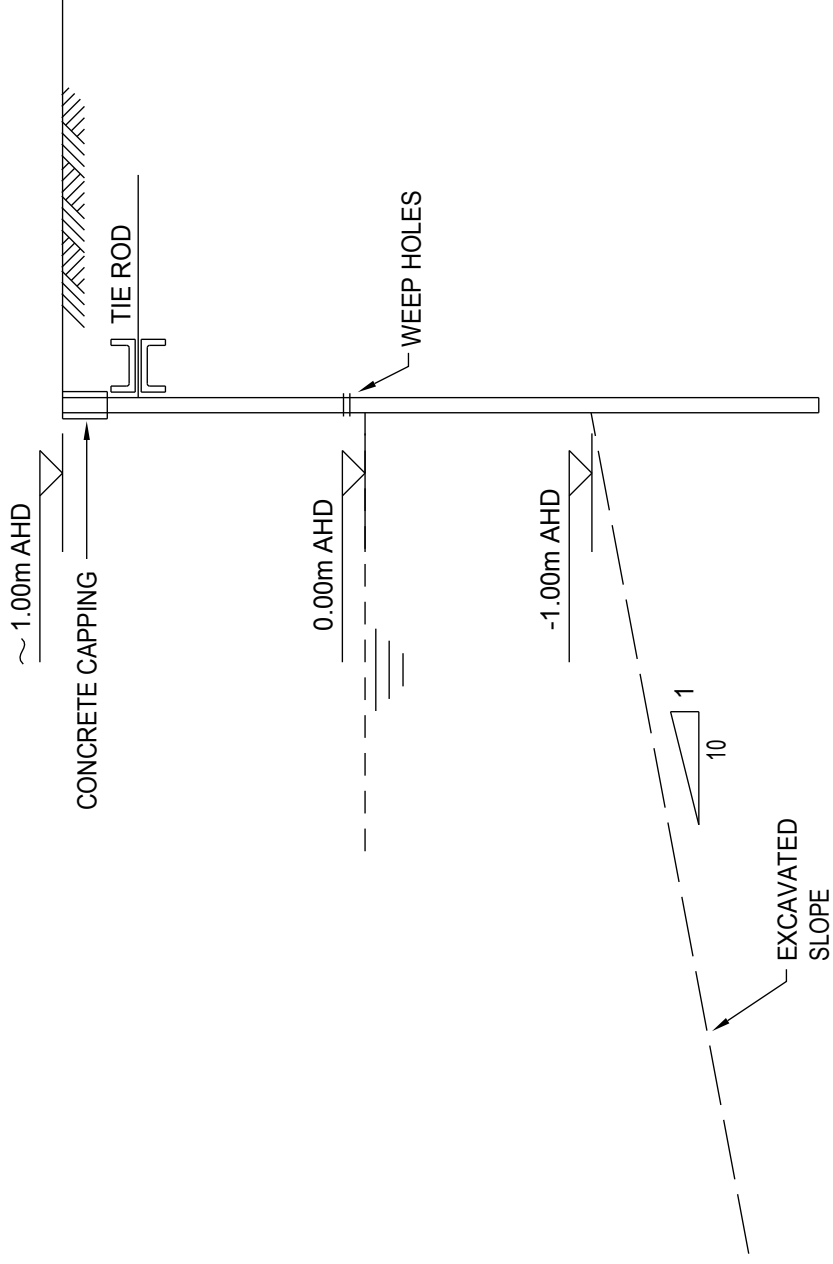
PILE AND CONCRETE STRIP BEAM

REVETMENT TYPE A

SECTION 2
NOT TO SCALE



NOTE:
ALTERNATIVE OPTION USING COMBINATION
OF STEEL 'H' PILES WITH PRECAST
CONCRETE PANELS POSITIONED IN BETWEEN
PILES.



SHEET PILE RETAINING WALL

SECTION **3**
NOT TO SCALE